



MooD 16 Build 057 Hotfix 2 - Features



BETTER DECISIONS
POWERED BY INSIGHT

MooD[®] software

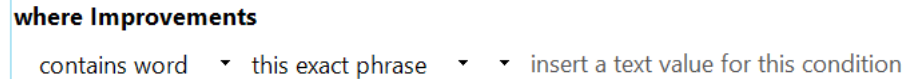
In addition to the 24 issues fixed – there are some things you should know about this hotfix.

- To fix issues with searching Formatted Text fields, and take advantage of some performance improvements, you may need to take action.
- We've added features to help you clean up your Formatted Text Fields and insert text.
- We've added a feature to help you tidy up lines on a model.
- We've added a feature to help with large, long running synchronizers causing instability.

So if you are interested in these changes, please read on.

Fixing failed queries with Formatted Text Fields

MooD queries can use a feature of Microsoft SQL Server called *Full Text Indexing*, when the *Contains Word* construct is used. When doing so, they can be 100 times quicker than *Contains Text*.



where Improvements
contains word ▾ this exact phrase ▾ ▾ insert a text value for this condition

A low-level issue prevented this from working – **meaning no results would be displayed.**

This affected *Formatted Text Fields* which have been upgraded from MooD 15, and some data imported by unsupported 3rd party integrators.

- Run MooD Repository Validator in *Check Only* mode to see if you have this problem
- Inspect the task: *Checking for erroneous byte order marks in HTML field data*, if there are any entries you should run the repair in *Fix* mode.
- Inspect queries used to search for text, you may benefit from adopting *Contains Word*.
- Note: *Contains Word* behaves differently to *Contains Text*, in that it doesn't support 'ends with' searching.

Cleaning up your Formatted Text Fields

Some users were experiencing difficulties in maintaining clean formatting in their reports.

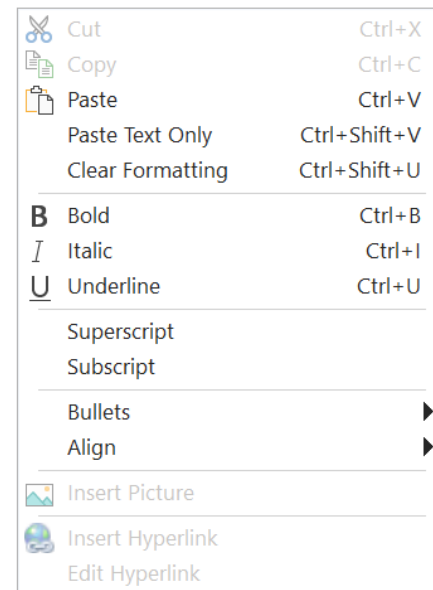
To aid this we've added some new options to the right mouse button in the Open Window.

Clear Formatting removes all formatting, and adopts the default settings.

Paste Text Only will strip formatted text from the current clipboard and insert text matching the style of your current paragraph.

If the Keyboard Accelerators do not appear, you may have to go to

Tools->Options->Customize->Keyboard, and click *Reset All*.



Tidying up lines on a model

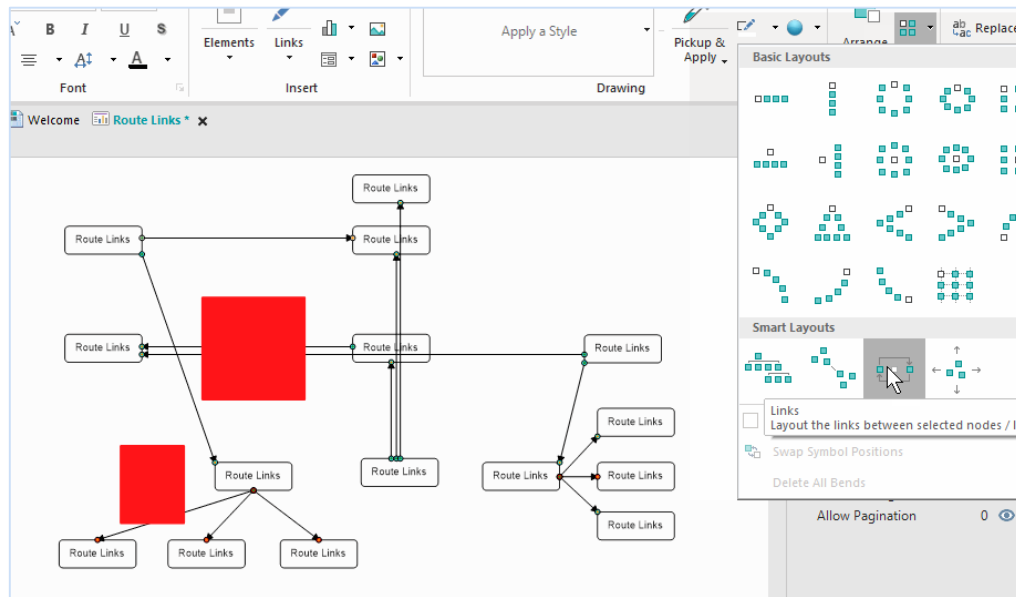
In the model canvas, a new *Smart Layout* option has been added.

When selecting links it will leave nodes in-situ but route any links which exist between them around nodes.

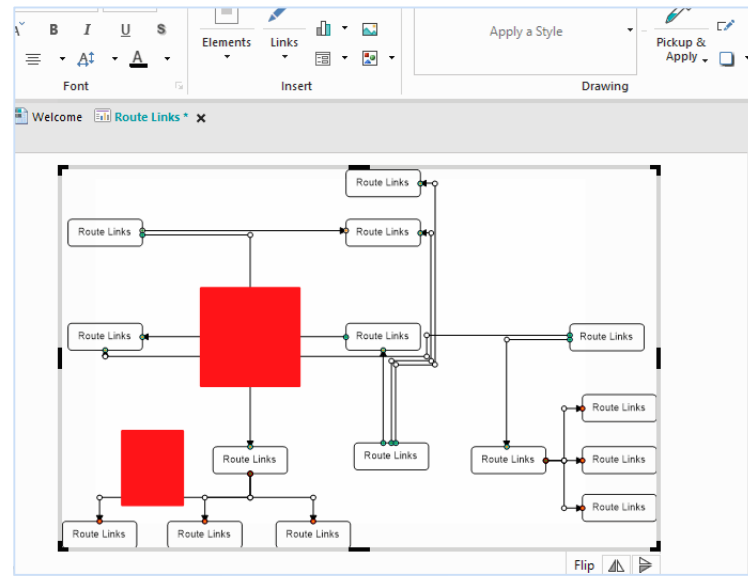
If selected, all nodes are considered as obstacles, including text boxes (in red below).

If you select links then their source and target nodes will be included in the selection automatically.

Links will automatically adopt horizontal / vertical hierarchy styles.



Before



After

Handling large/long running synchronizers in Active Enterprise

The Business Integration Engine can become unstable when synchronizations are greedy with memory. If you suffer such a problem, you can now ask Mood to isolate a specific Synchronizer, or an entire group into its own worker process, reducing the chances of error and providing resilience. We've placed the setting near the existing options for debugging/monitoring.

The screenshot displays the Active Enterprise user interface. At the top, a navigation bar includes icons for 'New', 'Execute', 'Schedule', 'History', 'Performance Report', 'Execute', 'History', 'Show Synchronized', and 'Archives'. Below this, a sidebar on the left shows a tree view of groups, with 'Stand alone process group' selected. The main content area shows a list of synchronizers, with 'Stand alone export Adobe PDF Export on Stand alone process' highlighted. A red arrow points from the 'History' icon in the top bar to a 'Activation History - Stand alone export' window. This window shows 'Activation History Filters' and 'Activation Run Dates' set to '20/02/2020 14:56'. A 'More...' button is visible at the bottom of this window. A second red arrow points from the 'More...' button to a 'More Details' dialog box. The dialog box contains the following information:

- Stand alone export
- ID: 67FC2C9F6D5A49E7B524DEEBF898F70D
- Exports
- Adobe PDF Export
- Creates an Adobe® "Portable Document Format" (PDF) file containing the set of selected models

Below the details, there is a text box: "When the Synchronization is executed, information about what is happening during the execution can be logged to a file to help diagnose issues." This is followed by a "Log messages to a file:" label, an empty text input field, and a "Browse..." button. At the bottom of the dialog, there are two checkboxes:

- Turn on extended information.
- When scheduled or from the web, execute this Synchronization in it's own process.

The dialog box has "OK" and "Cancel" buttons at the bottom right.